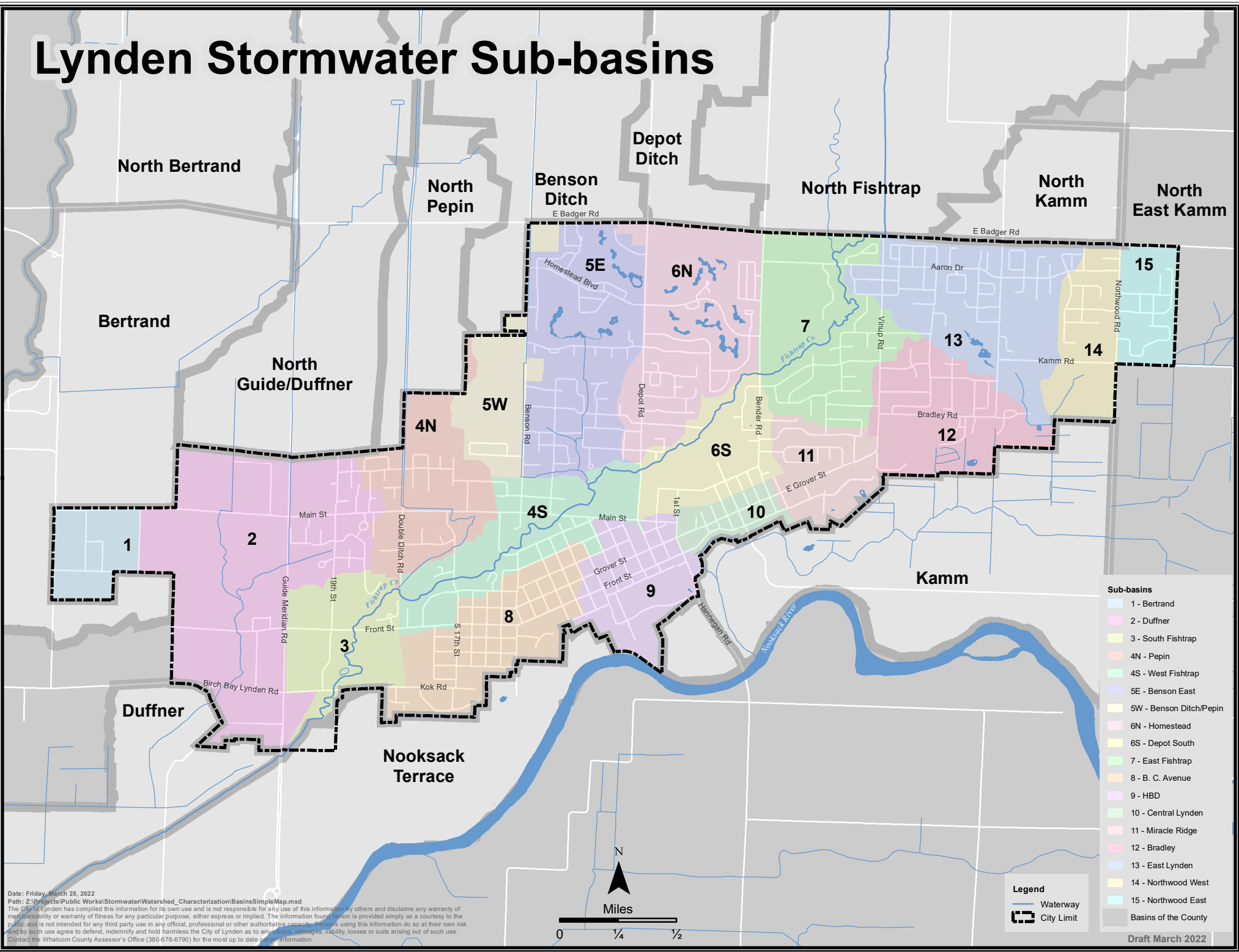


# Lynden Stormwater Sub-basins



- Sub-basins**
- 1 - Bertrand
  - 2 - Duffner
  - 3 - South Fishtrap
  - 4N - Pepin
  - 4S - West Fishtrap
  - 5E - Benson East
  - 5W - Benson Ditch/Pepin
  - 6N - Homestead
  - 6S - Depot South
  - 7 - East Fishtrap
  - 8 - B. C. Avenue
  - 9 - HBD
  - 10 - Central Lynden
  - 11 - Miracle Ridge
  - 12 - Bradley
  - 13 - East Lynden
  - 14 - Northwood West
  - 15 - Northwood East
- Basins of the County**
- North Bertrand
  - Bertrand
  - North Guide/Duffner
  - Duffner
  - North Pepin
  - Benson Ditch
  - North Fishtrap
  - North Kamm
  - North East Kamm
  - Kamm
  - Nooksack Terrace

**Legend**

- Waterway
- City Limit

N

Miles

0 1/4 1/2

Date: Friday, March 25, 2022  
 Path: Z:\Projects\Public Works\Stormwater\Watershed\_Characterization\BasinsSimpleMap.mxd  
 The City of Lynden has compiled this information for its own use and is not responsible for any use of this information by others and disclaims any warranty of merchantability or warranty of fitness for any particular purpose, either express or implied. The information found herein is provided simply as a courtesy to the public and is not intended for any third party use in any official, professional or other authoritative capacity. Persons using this information do so at their own risk and by such use agree to defend, indemnify and hold harmless the City of Lynden as to any claims, damages, liability, losses or suits arising out of such use. Contact the Whatcom County Assessor's Office (360-676-6790) for the most up to date information.